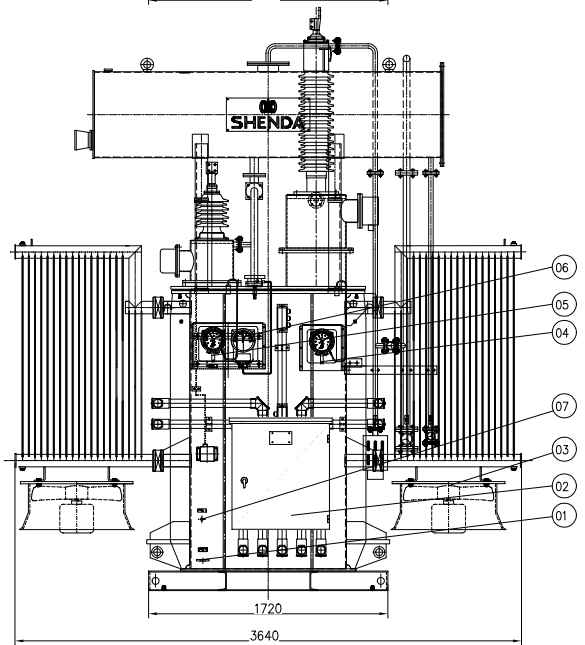
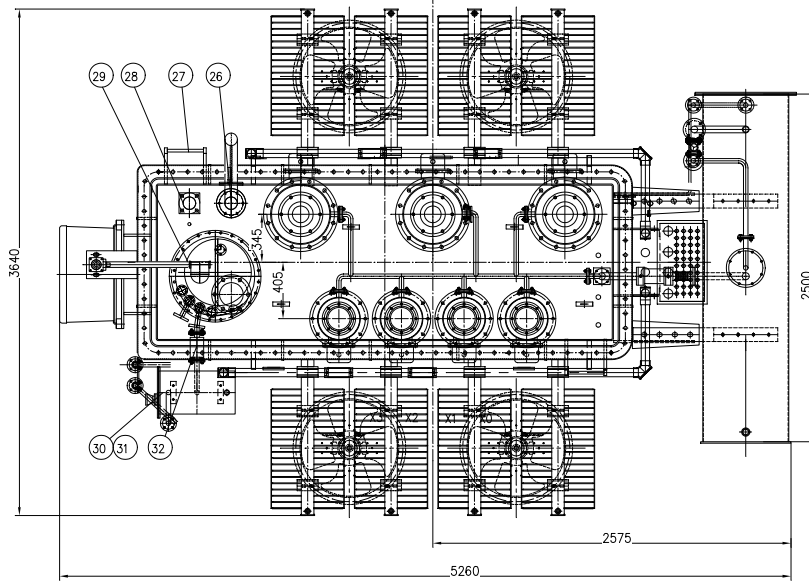
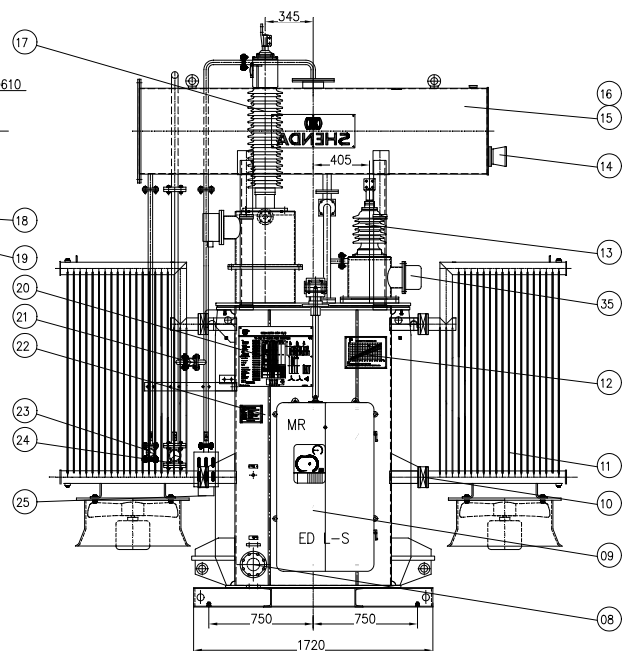
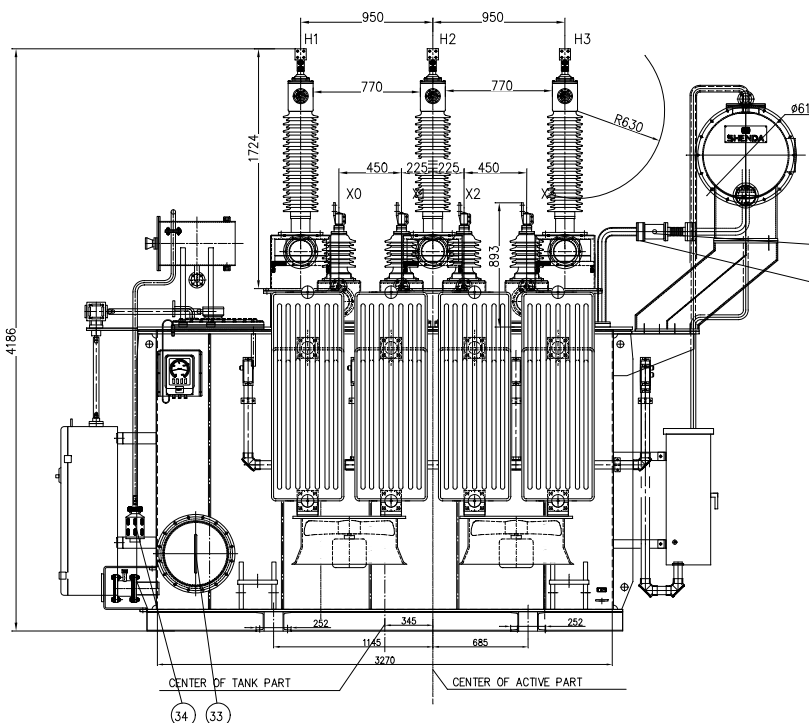



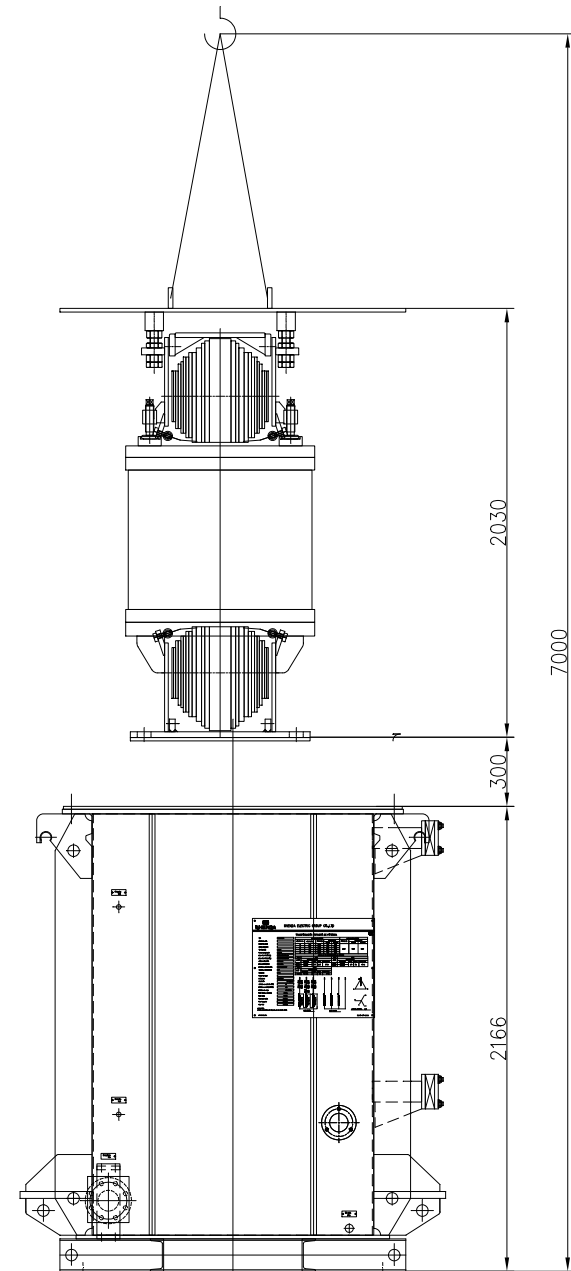
A
B
C
D
E
F
G
H

No.	Code	Qty	Name
35	BC14-15a	07	CT BOX
34	0.5Kg	01	AIR BREATHER OF OLTC CONSERVATOR
33	Ø450	01	MANHOLE OF OLTC
32	QJ4-25	01	RELE BUCHHOLZ OF OLTC
31	YZF2-140	01	OIL LEVEL INDICATOR FOR OLTC CONSERVATOR
30	Ø310x500	01	CONSERVATOR OF OLTC
29	VVSII-3500/72.5-10193W	01	Vacuum on-load switch
28	Ø80	01	UPPER FILTERING VALVE
27		01	LADDER
26	YSI-55/50	01	PRESSURE RELIEF DEVICE WITH CONTACT
25	3.0Kg	01	AIR BREATHER OF MAIN CONSERVATOR
24	Ø50	01	VACUUMIZE VALVE
23	Ø25	01	DRAINING AND FILLING VALVE OF MAIN CONSERVATOR
22		02	OIL OF POWER TRANSFORMER NAME PLATE
21	Ø25	01	CONNECT VALVE FOR MAIN CONSERVATOR AND RUBER BAG
20		01	NAMEPLATE
19	DF-80-3.00	02	ISOLATING VALVE OF MAIN CONSERVATOR
18	QJS-50	01	MAIN BUCHHOLZ RELAY
17	BRDLW-72.5/630-4	03	H.V. NEUTRAL BUSHING
16	Ø610x2500	01	RUBER BAG FOR CONSERVATOR
15	Ø610x2500	01	CONSERVATOR
14	YZF3-250	01	OIL LEVEL INDICATOR WITH CONTACT FOR CONSERVATOR
13	BFWC-24/630-4L	04	L.V. BUSHING
12		01	OIL TEMPERATURE CURVE BRAND
11	PCJ 1500(1100)-20(31/520	08	COOLING RADIATOR
10	Ø80	16	RADIATOR VALVE
09	ED L-S	01	MOTOR DRIVE UNIT
08		01	BOTTOM DRAINING AND FILLING VALVE
07		02	BOTTOM DRAINING PLUG
06	BWY-803A /YE	01	OIL TEMPERATURE INDICATOR WITH CONTACT
05	BWR-04 /YE	01	WTI FOR SECONDARY
04	BWR-04 /YE	01	WTI FOR PRIMARY
03	CFZ-7Q-6	04	FANS ZHEJIANG ERG
02		01	CONTROL BOX
01		02	EARTHING SCREW

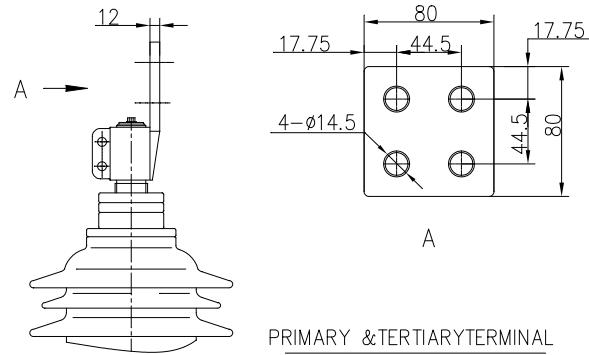


NAME		WEIGHT(Kg)	
Tank & accesories		8430	
Transformer active part		10620	
Total oil weight		6150	
Transportation weight		20270	
Total weight		25200	
Cliente:			
 SHENDA		SHENDA ELECTRIC GROUP CO LTD P.R. CHINA	
		10MVA 66±8X1.25%/13.8KV	
DESIGNER	JYSh	TECHNOLOGIST	QLI
CHECKER	LKZhu	APPROVER	SLI
VERIFIER	XYZhou	DATE	2023-09-23
		N° Drawing	
		Size	
		1SD.001.12637	
		A3	
		Denomination:	
		OVERALL DIMENSION AND ACCESSORIES	

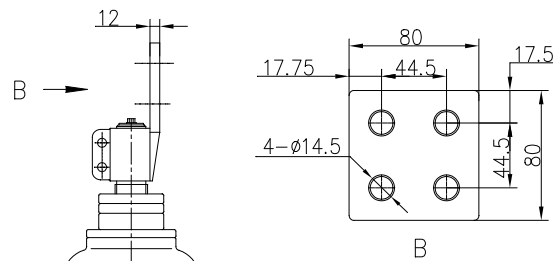
A
B
C
D
E
F
G
H



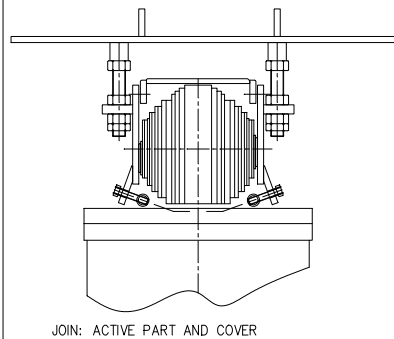
LIFTING SKETCH



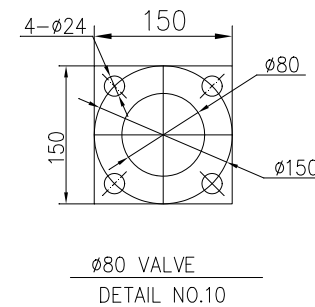
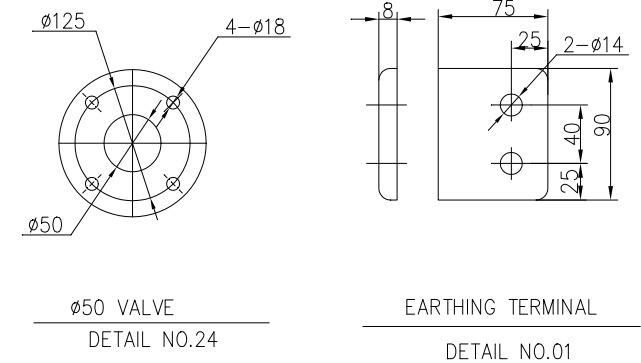
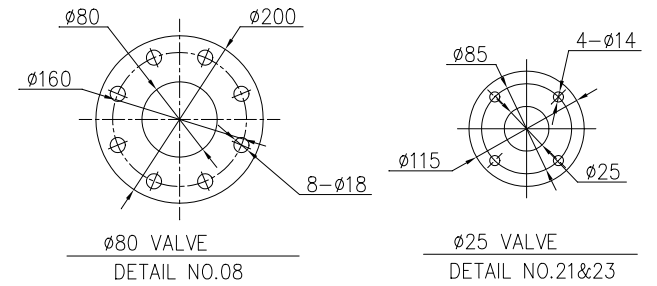
PRIMARY & TERTIARY TERMINAL
DETAIL NO.36 • NO.17



SECONDARY TERMINAL
DETAIL NO.13



JOIN: ACTIVE PART AND COVER



Cliente:

 SHENDA ELECTRIC GROUP CO LTD P.R. CHINA				10MVA 66±8X1.25%/13.8KV		
				N° Dibujo	Escala	Tamaño
DESIGNER	JYShi	TECHNOLOGIST	CLLi	SD.002.12637	1/1	A3
CHECKER	LMZhu	APPROVER	SLLi	Denominación: DIAGRAMA DE IZAJE, VÁLVULAS Y TERMINALES		
VERIFIER	XYZhou	DATE	2023-09-23			



SHENDA ELECTRIC GROUP CO.,LTD

ON-LOAD TAP-CHANGER POWER TRANSFORMER



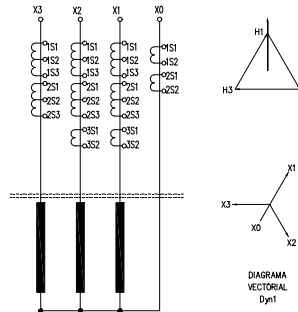
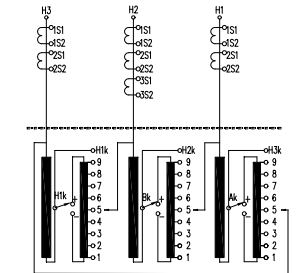
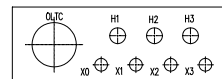
TYPE	SFZ-10000/B6
NUMBER OF PHASES	3
RATED FREQUENCY	50 HZ
RATED POWER	8/10 MVA
VOLTAGE COMBINATION	66kV/13.8kV/10kV
COOLING TYPE	ONAN/ONAF
SERVICE LOCATION	OUTDOOR
ALTITUDE	≤1000m
CONNECTION SYMBOL	Dyn1
B.L. PRIMARY VOLTAGE	32kV
B.L. SECONDARY VOLTAGE	9kV
IMPEDANCE VOLTAGE	%
NO-LOAD CURRENT	%
NO-LOAD LOSS	kw
LOAD LOSS	kw
TANK AND ACCESSORIES	8430 KG
TRANSFORMER ACTIVE PART	10620 KG
TOTAL OIL WEIGHT	6150 KG
TRANSPORTATION WEIGHT	20270 KG
TOTAL WEIGHT	25200 KG
EX-WORKS SERIAL NO.	
DATE OF MANUFACTURE	
STANDARD No.	ANSI.C57.12

CAUTION: 1. THE SECONDARY SIDE OF BCT
MUST NOT BE OPEN CIRCUIT.

TEL: +86-570-4221172

TAP POSITION	CONVERTER SELECTION CONNECTION	PRIMARY WINDING			SECONDARY WINDING	
		TAPPING VOLTAGE (V)	ONAN ONAF	CURRENT (A)	VOLTAGE (V)	CURRENT (A)
1	HTK-H1+ H2K-H2+ H3K-H3+	72800	63.6	79.5	13800	418.4
2		71775	64.3	80.4		
3		70950	65.1	81.4		
4		70125	65.8	82.3		
5		69300	66.6	83.3		
6		68475	67.4	84.3		
7		67650	68.2	85.3		
8		66825	68.9	86.4		
9a		66000	70.0	87.5		
9b		66000	70.0	87.5		
9c		66000	70.0	87.5		
10		65175	70.9	88.6		
11		64350	71.8	89.7		
12		63525	72.7	90.9		
13		62700	73.7	92.1		
14		61875	74.6	93.3		
15		61050	75.7	94.6		
16		60225	76.7	95.9		
17		59400	77.8	97.2		

DATA OF BUSHING CURRENT TRANSFORMER					
SITE	TYPE	NO.S	CURRENT RATIO	ACCURACY CLASS	BURDEN (VA)
H1,H2,H3 PHASE	UB-66	3	200/1	SP20	10
	UB-66	3	200/1	SP20	10
H2 PHASE (TO WT)	UB-66	1	200/1	0.5CL	10
X1,X2,X3 PHASE	UB-13.8	3	250-500/1	SP20	10
	UB-13.8	3	250-500/1	SP20	10
X1 PHASE (TO AVR)	UB-13.8	1	500/5	0.5	10
X2 PHASE (TO WT)	UB-13.8	1	500/5	0.5CL	10
X0 PHASE	UB-13.8	2	250-500/1	SP20	10



www.shenda.com

6-Ø6

10

510

530

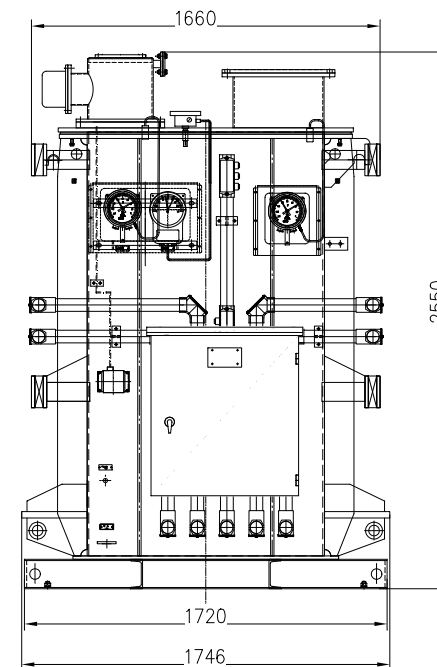
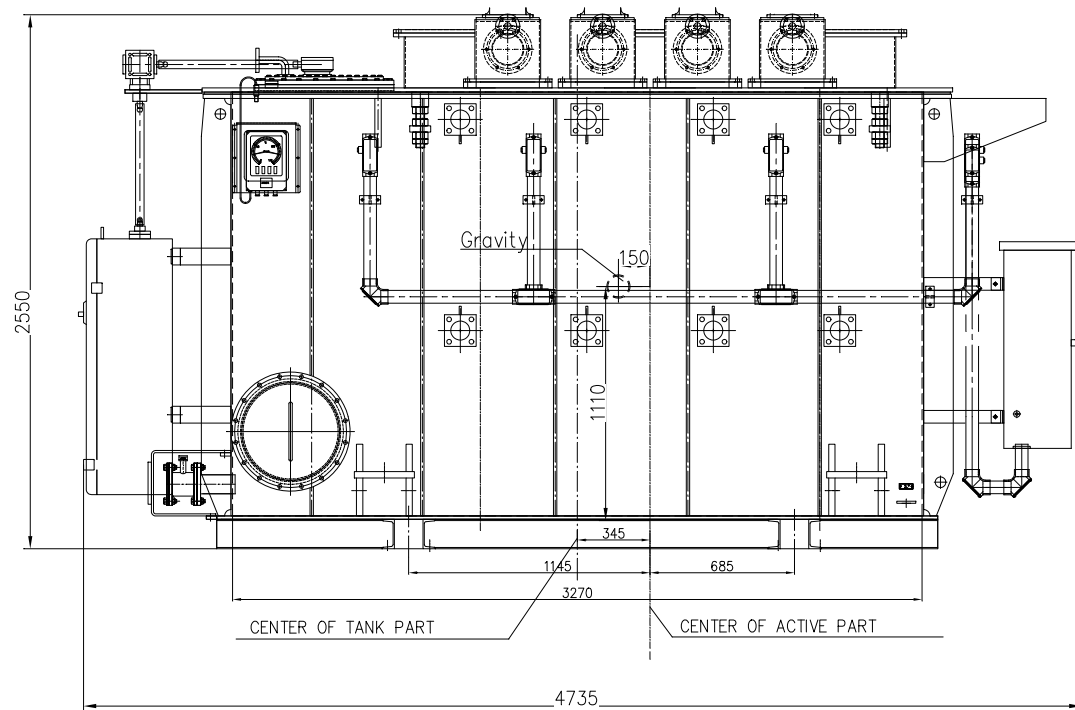
Cliente:

SHENDA

SHENDA ELECTRIC
GROUP CO LTD P.R. CHINA

10MVA
66±8X1.25%/13.8KV


				N° Drawing		Size		
DESIGNER		JSM	TECHNOLOGIST		QJL		8SD.003.12637	A3
CHECKER		LMHu	APPROVER		SLJ			
				Denomination:				NAME PLATE
VERIFIER		XYQau	DATE		2023-09-17			



Notes:

- 1.THE TRANSFORMER IS TRANSPORTED FILLED OIL
- 2.DURING TRANSPORTATION ,THE INCLINATION OF TRANSFORMER OR LOAD SURFACE NOT EXCEED 15°,THE SPEED SHALL NOT EXCEED 20KM/H
- 3.THE SHIELD ONLY USED FOR SAFEGUARD DURING THE TRANSFORMER TRANSPORT WOULD REMOVE IT BEFORE THE TRANSFORMER RUNNING

WEIGHT OF TRANSPORT :25200Kg

Customer:			
		SHENDA ELECTRIC GROUP CO.LTD P.R. CHINA	
		10MVA 66+8(-8)X1.25%/13.8KV	
DESIGNER	JYSh	TECHNOLOGIST	QLJ
CHECKER	LMZhu	APPROVER	SLJ
VERIFIER	XYZhou	DATE	2023-09-17
		Denomination: Transportation drawing	
		N° Drawing	Size
		8SD.004.12637	A3